



# ALL THINGS WILD

## SUSTAINABILITY POLICY 2024



# SUSTAINABILITY AT ALL THINGS WILD

To be environmentally sustainable is to use natural resources – such as water, soil, and timber – in a manner that does not deplete them and does not cause environmental harm.

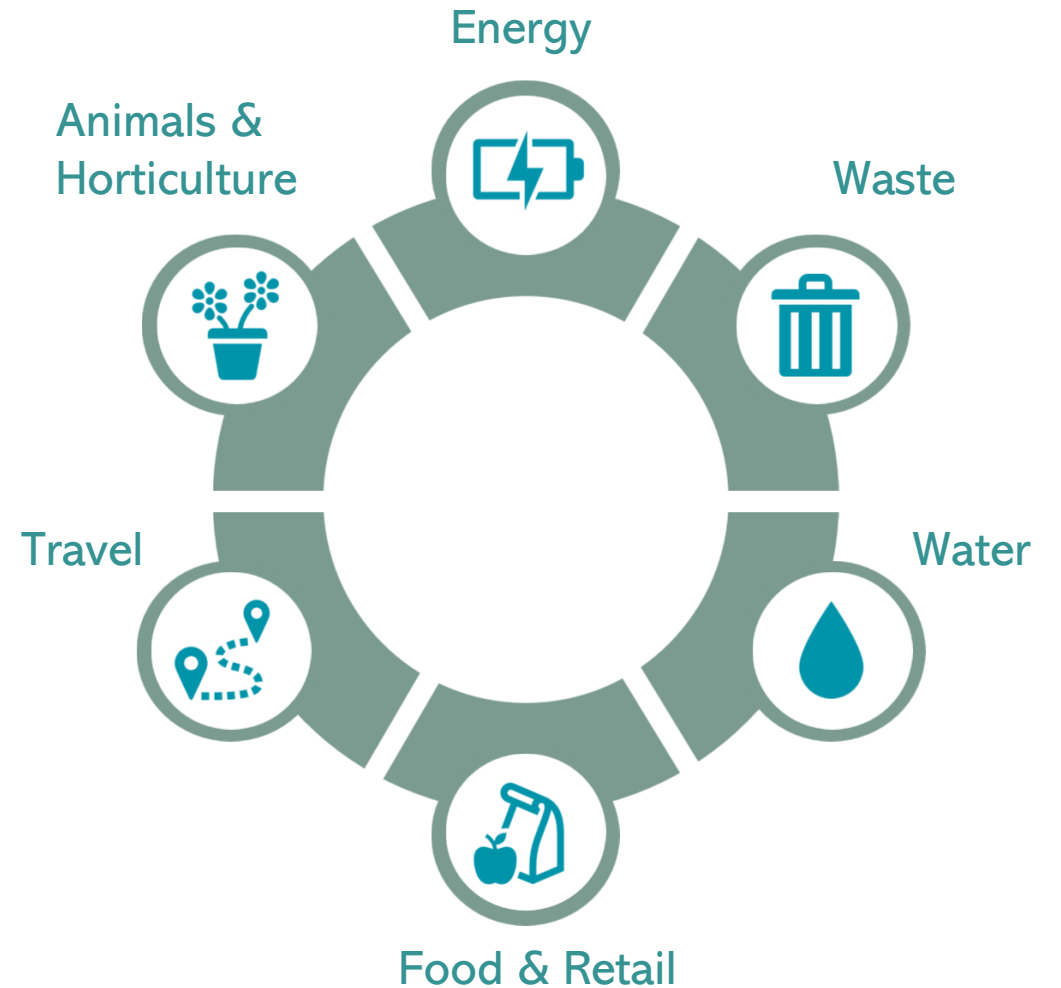
Sustainability is important because it conserves natural resources for use in the future. This means that generations to come can access the same privileges that we enjoy today – such as nutritious food and clean water. And it's not just about us...

Behaving sustainably also ensures we safeguard a healthy planet that can support all the diverse and vibrant living things that make it so special – from the tiniest creepy crawlies to the tallest trees!

At All Things Wild, we aim to implement sustainable practices wherever possible and encourage our visitors to behave similarly. Our sustainability policy describes these efforts and, because we recognise that there is always room to improve, outlines our future sustainability targets.



## OUR SUSTAINABILITY POLICY COVERS:



# ENERGY



Climate change is a huge threat to biodiversity as well as human health and wellbeing. Average global temperatures continue to rise above pre-industrial levels with some of the most serious consequences including biodiversity loss, extreme weather, and food insecurity.

To tackle climate change, we *must* reduce greenhouse gas emissions. Therefore, reducing our reliance on fossil fuels and conserving energy are an important part of All Things Wild's energy strategy and efforts to be more sustainable.

We have taken significant steps to reduce the amount of energy we use daily – for example by effectively insulating indoor spaces and switching to low-energy lighting.

We have also installed solar panels to begin our transition away from fossil fuels. Ultimately, our goal is to reach Net Zero emissions in line with national and international targets. To monitor our progress on the path to Net Zero, we have signed up to a Future Net Zero scheme to help us track our emissions.



## PROGRESS

- All new builds are effectively insulated, and we have renewed or replaced the insulation in many of our existing buildings.
- All light bulbs have been replaced with low-energy equivalents and new builds make use of natural light.
- We installed solar panels on the roof of our Jungle Mayhem Soft Play building to reduce our reliance on fossil fuels and begin our transition to renewable energy.
- We monitor our carbon emissions.

## TARGETS

- Confirm a target date for reaching Net Zero emissions.

# WASTE



Why worry about waste? Well, in 2021 alone UK households produced over 27.6 MILLION metric tons of waste<sup>1</sup>. All this rubbish must go somewhere, and if we send it all to landfill it will take hundreds of years to decompose and we will soon run out of space.

Therefore, we seek to be more sustainable both by reducing the overall volume of waste we produce and, when it comes to unavoidable waste, by considering the best methods for disposal that reduce the volume sent to landfill.

1. [UK: household waste generation by country | Statista](#)

At All Things Wild, we aim to:

- Decrease our solid waste generation.
- Procure products and use materials that generate less waste.
- Increase the amount we reuse & recycle.
- Convert remaining waste to electricity and minimise the use of landfills for solid waste disposal.
- Educate visitors about waste and show them how they can be more sustainable in their lives.

## PROGRESS

- All cardboard boxes we receive in deliveries are reused by a local auction house.
- All plastic bottles have been removed from sale and we installed a water fountain to encourage visitors to use refillable water bottles instead.
- Bins for visitors are separated into general waste and recycling with clear signage showing what can be put in each.
- Much of our waste is diverted to 'Energy from Waste' facilities to generate electricity and reduce the volume sent to landfill, (for precise details on how we dispose of different waste types, see next page).

## TARGETS

- Offer hot drinks at a discount to visitors who bring reusable cups.

# ZERO TO LANDFILL: WHERE OUR WASTE GOES



Waste type	Disposal method
General waste (incl. sanitary waste)	Transported to energy from waste facilities in certified carbon neutral vehicles where it is used to generate electricity.
Recyclable waste	Transported to materials recovery facilities in certified carbon neutral vehicles.
Food waste	Transported to anaerobic digestion facilities in certified carbon neutral vehicles where it is used to produce biogas.
Cooking oil	Used cooking oil is converted to biodiesel.
Plant & garden waste	Composted on site; wood may be chipped and used for enclosures or used to create woodpiles as a habitat for native wildlife.
Maintenance waste	Unused materials are stored for reuse or recycled for another purpose.
Animal waste	Herbivore waste is stored on a muck heap and removed regularly. Carnivore waste and category 1 & 2 animal by-products are incinerated.

# WATER



Water is a precious and limited resource. There might seem to be a lot of it about, but did you know that only 3% of the water on earth is freshwater and of this, most is locked away in ice or under the ground with less than 1% accessible for people to use?!<sup>2</sup>

Furthermore, when we waste water, we also waste the energy and resources that were used to make it drinkable and transport it to our homes and businesses.

2. Earth's Fresh Water  
(nationalgeographic.org)

We therefore all have a responsibility to use water wisely. At All Things Wild, we aim to conserve and reuse water where possible, and educate and remind our visitors about the importance of saving water so they can do the same.

All the rain that runs off the roof of our main building is used to flush toilets; similarly, we collect rain in water butts for use around our site. Our water meter is also regularly checked to ensure there are no unnoticed leaks!



## PROGRESS

- Rainwater is collected in water butts for use around our site.
- Rainwater from the roof of our main building is collected and used to flush toilets.
- All new toilets have a dual-flush system.
- We regularly check our water meter to ensure there are no leaks.

## TARGETS

- We have identified that taps are often left on by our visitors leading to water wastage, so we are looking at possibilities for changing our taps and/or increasing signage on this issue.
- Incorporate more drought-resilient plants into our planting schemes.



# FOOD & RETAIL



We believe that sustainable food and retail practices are essential for protecting our planet and ensuring a healthy future for all. The choices we make in what we consume and how we shop can significantly impact the environment - from reducing waste to conserving natural resources.

Importantly, what we offer to our visitors at the zoo needs to support our core conservation message. Therefore, we prioritise

supporting ethical and eco-friendly businesses in our food and retail sectors to minimise our ecological footprint, protect biodiversity, and foster a more conscious and responsible way of living.



## PROGRESS

- Our procurement policy prioritises products with minimal packaging or with packaging that can be recycled or composted.
- Bulk ordering reduces emissions from transportation.
- Food is sourced as locally as possible.
- Tea, coffee, and hot chocolate is fairtrade; our coffee is also certified by Rainforest Alliance, and many other ingredients are Red Tractor assured.
- Food packaging and cutlery is compostable, sauce is served from large containers not single-use sachets, and fresh milk is supplied in jugs rather than single-use UHT jiggers.

## TARGETS

- To only stock products that are palm oil-free or RSPO approved and to hold certifications for all products on file.

# TRAVEL



Did you know that the transport sector is a huge contributor to greenhouse gas emissions, with road transport being the major culprit – even ahead of aviation?!<sup>3</sup>

Driving less has many benefits - it reduces greenhouse gas emissions, noise pollution, and particulate pollution; improves air quality; eases congestion and lessens the demand for new road infrastructure.

To encourage our staff and visitors to travel car-free, we provide facilities for bike storage and promote

[3. Sector by sector: where do global greenhouse gas emissions come from? - Our World in Data](#)

our local public transport links regularly on both our website and social media.

We are also partnered with Good Journey and offer visitors who travel by bus, train, or bike free hot drinks as an extra incentive. Finally, for unavoidable business travel, we have invested in an electric van.



## PROGRESS

- We purchased an electric van for business travel.
- We provide bike storage for visitors and staff.
- Our partnership with Good Journey encourages visitors to travel to our site car-free; we offer free hot drinks to visitors who travel by bus, train, or bike and advertise these perks on our website and social media.

## TARGETS

- Increase marketing for rail travel – we will also investigate possibilities for advertising at the train station and providing signage to direct people to our site.



# ANIMALS & HORTICULTURE



We are lucky to have a large site and know that managing our grounds responsibly can help us be more sustainable.

Our grounds team work hard to develop planting schemes that maintain and enhance native biodiversity, and source new plants from local, sustainable suppliers.

Many areas around the site are also managed in a wildlife-friendly way – including our ponds and Wild Meadow where the grass is left to grow long.

We try to tread lightly on the land by avoiding fertiliser use and minimising herbicide use – as these chemicals can negatively impact surrounding ecosystems. But we also make use of the space we have by growing browse onsite for our animals, reducing the amount of feed that must be bought in.

Finally, in our enclosures and exhibits we reuse old materials wherever possible, giving them a new lease of life and preventing anything from going to waste!



## PROGRESS

- Browse is grown onsite so less animal feed needs to be bought and delivered, reducing transport emissions.
- FSC approved timber is used for building and we reuse materials from other exhibits where possible.
- New plants are sourced locally from suppliers with good environmental practices.
- We use peat-free compost to protect valuable peatland habitats from degradation and destruction.
- We don't use fertiliser as this would adversely impact local waterways, and we favour mechanical weed control over herbicides where possible.

## TARGETS

- Upgrade all our animal enclosures to improve insulation and make better use of natural light, thereby enhancing overall energy efficiency.